

OUR MISSION



To deliver economic incentives to businesses and industries to diversify and strengthen Herkimer County's tax base and enhance community vitality by supporting job creation, business and industrial development, and community revitalization.

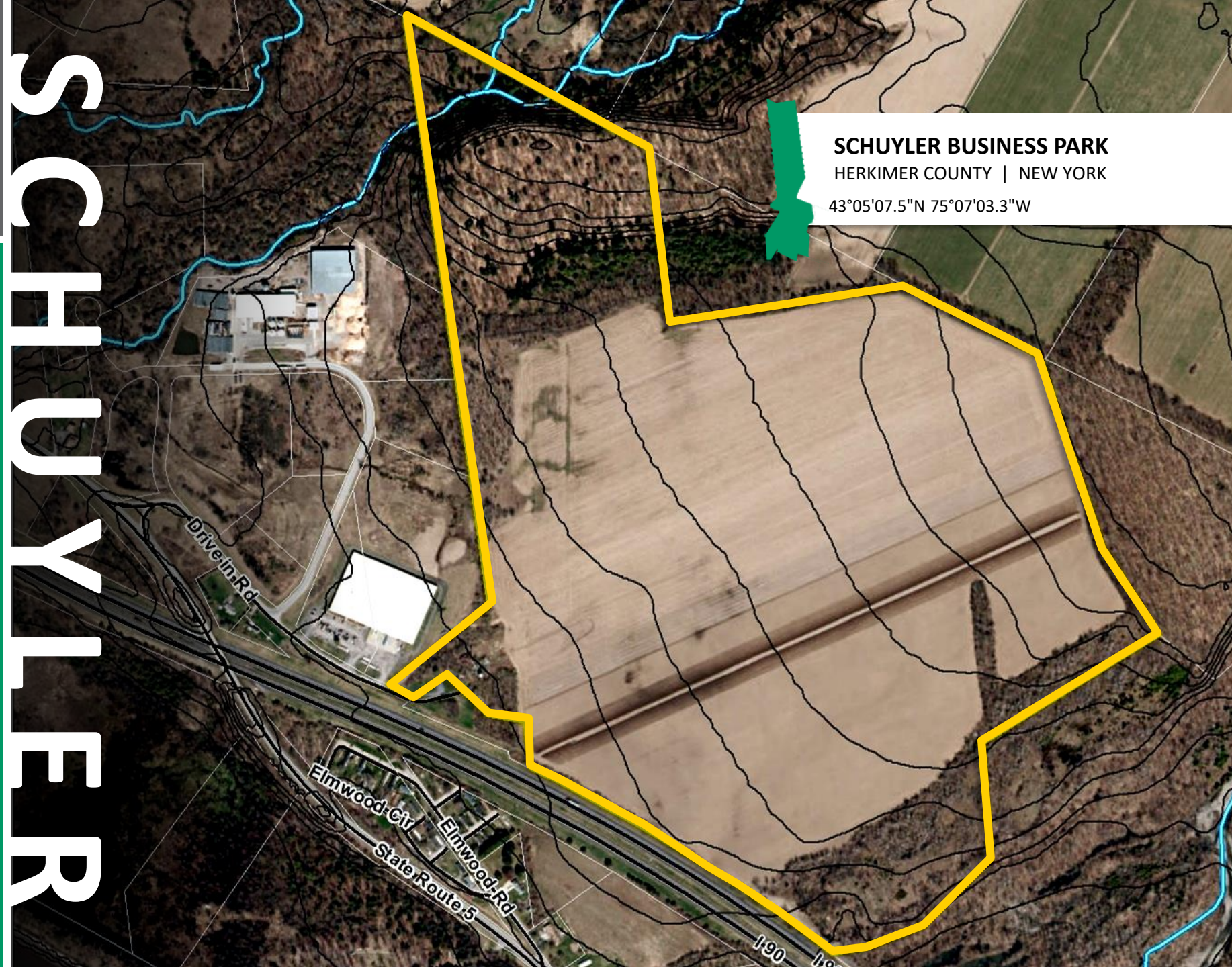
We strive to develop the local economy in an organized, sustainable and environmentally beneficial manner.



John Piseck, Jr., Executive Director
HERKIMER COUNTY INDUSTRIAL
DEVELOPMENT AGENCY

Office 315.866.3000
Mobile 315.868.4928
herkimercountyida.org

SPONSORED BY
nationalgrid
HERE WITH YOU. HERE FOR YOU



SCHUYLER BUSINESS PARK

HERKIMER COUNTY | NEW YORK

43°05'07.5"N 75°07'03.3"W



CONTACT

John Piseck, Jr., Executive Director
Herkimer County Industrial
Development Agency

315.868.4928 Mobile
315.866.3000 Office
jpiseck@herkimercountyida.org

THE SITE



herkimercountyida.org



- Highway connectivity with a less than 12 mi./10-minute drive to NYS Thruway (I-90)
- Access road to State Highway 5 supports tractor-trailer traffic
- Metro commute - 0:15 to Utica, 0:30 to Rome, 0:55 to Syracuse, 0:90 to Albany
- Build Now – NY Shovel Ready Certified; 188+ Acre Site suitable for up to 2 million square feet of buildings
- Planned Development zoning to accommodate manufacturing, warehouse and distribution
- 188 Acre Site (irregular), gently sloping south to north
- 3-Phase Power at site and Natural Gas 4 inch @35#; supplied by National Grid
- Water at the curb, provided by Mohawk Valley Water Authority
- Site/soil conditions suitable for large-scale on-site system(s); Sewer available <5 miles from site
- Planning board approval, SEQR process, and permits can be secured within 60 days
- Competitive land prices with build to suit options available
- Nearest International Airports: 0:25 to RME, 1:05 to SYR, and 1:20 to Albany



1 Million Square Feet

500,000 Square Feet

200,000 Square Feet

PRIMARY CONCEPT PLAN

CONTACT

John Piseck, Jr., Executive Director
Herkimer County Industrial
Development Agency

315.868.4928 Mobile
315.866.3000 Office
jpiseck@herkimercountyida.org

ALTERNATE CONCEPT

2 Million Square Feet

- ALTERNATE OPTION ALLOWS FOR FLEXIBILITY IN BUILDING LAYOUT
- SUITABLE FOR A RANGE OF BUSINESS TYPES AND NEEDS

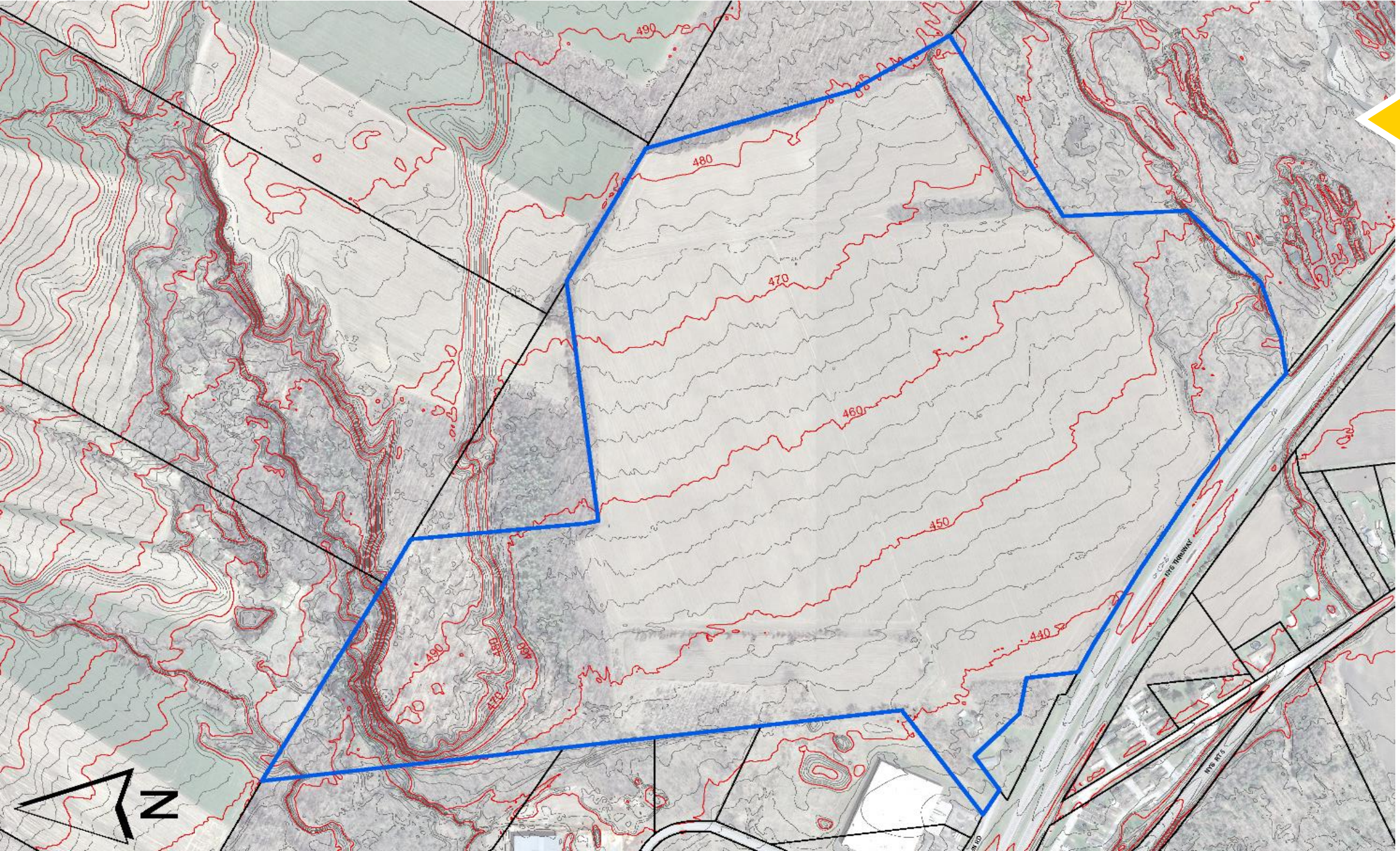
CONTACT

John Piseck, Jr., Executive Director
Herkimer County Industrial
Development Agency

315.868.4928 Mobile

315.866.3000 Office

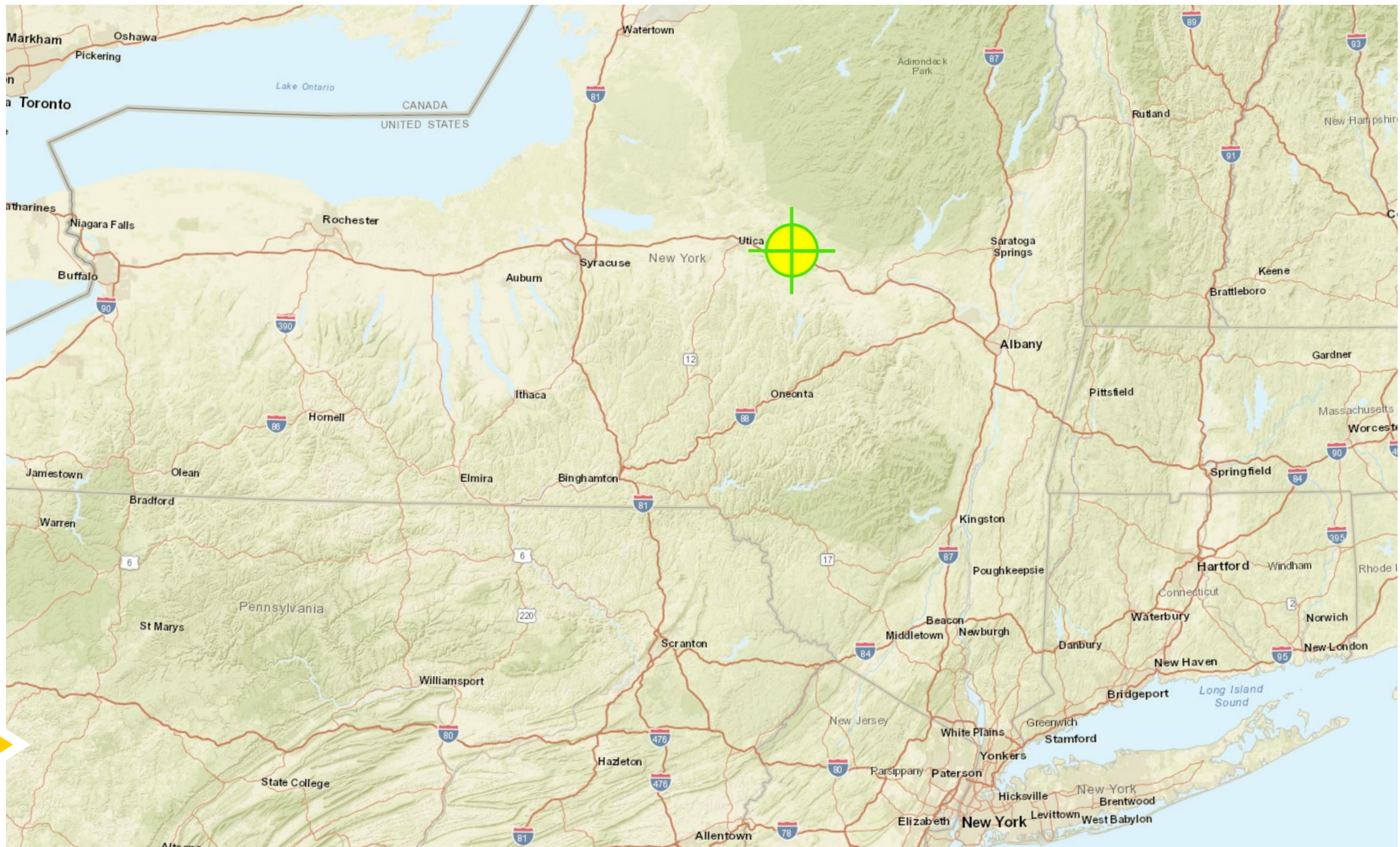
jpiseck@herkimercountyida.org



CONTOUR MAP



CONTEXT MAP





Established in 1970, the HCIDA is Herkimer County’s lead agency that promotes, develops, and encourages quality economic development projects. In addition to industrial marketing, the IDA acts as a coordinating agency for a variety of corporate financing and incentive programs offered by local, regional, state, and federal agencies assisting businesses, who seek such financing.

Why Herkimer

Herkimer County offers countless activities and destinations. From mountains to valleys; canals to lakes; from shopping to exploring the great outdoors, Herkimer truly has something for everyone.



- Historical Destinations
- Adirondack Park and Scenic Railroad
- Old Forge Village
- View Arts Center
- Cultural Festivals and Fairs
- Enchanted Forest Water Safari
- Herkimer Diamond Mines
- Variety of Dining and Shopping

BUILDING STRONGER...



BUSINESSES



HOUSEHOLDS



COMMUNITIES

MAJOR EMPLOYERS



Oneida Indian Nation	Tourism	4,750
Mohawk Valley Heath System	Healthcare	4,279
Bassett Healthcare	Healthcare	4,267
Upstate Cerebral Palsy	Social Services	2,000
Metlife Inc.	Insurance/Finance	1,368
Resource Center for Independent Living	Social Services	1,250
Air Force Research Lab	Research & Development	1,182
Utica National Insurance Group	Insurance/Finance	1,112
Wal-Mart Stores Distribution Cntr.	Warehousing	1,011
Defense Finance and Accounting Service	Insurance/Finance	950
The Masonic Care Community NY	Healthcare	900
Remington Arms	Manufacturing	850
BNY Mellon	Insurance/Finance	835
Rome Memorial Hospital, Inc.	Healthcare	711
Hamilton College	Higher Education	695
ConMed	Manufacturing	650
Indium Corporation	Manufacturing	650

TOTAL WAGES SINCE 2010	+18%
REGIONAL GDP SINCE 2010	+21%
REGIONAL EXPORTS SINCE 2010	+34%
POPULATION AGES 20-34 SINCE 2011	+3%



Mohawk Valley
Regional Economic
Development Council

The Region Mohawk Valley

Boasting some of the most affordable real estate in New York State, the Region is increasingly attracting corporate investment in manufacturing, R&D, and high-tech. This region is the geographic center of Upstate New York along the Erie Canal, including the historic urban centers of Utica, Rome, and Amsterdam. It is within 100 miles of major markets in every direction including Albany (90 miles), Syracuse (50 miles), Binghamton (80 miles), and the Canadian border (100 miles).

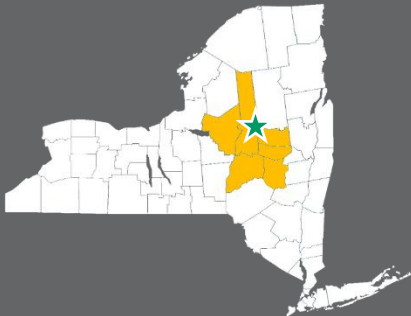
The Mohawk Valley is a unique mix of pastoral beauty and urban amenities, contributing to a rich diversity of culture and lifestyles. The popularity of home-grown arts, professional sports, craft food & beverages, and adventure tourism make the Mohawk Valley a globally-recognized destination for families, visitors, and talent.

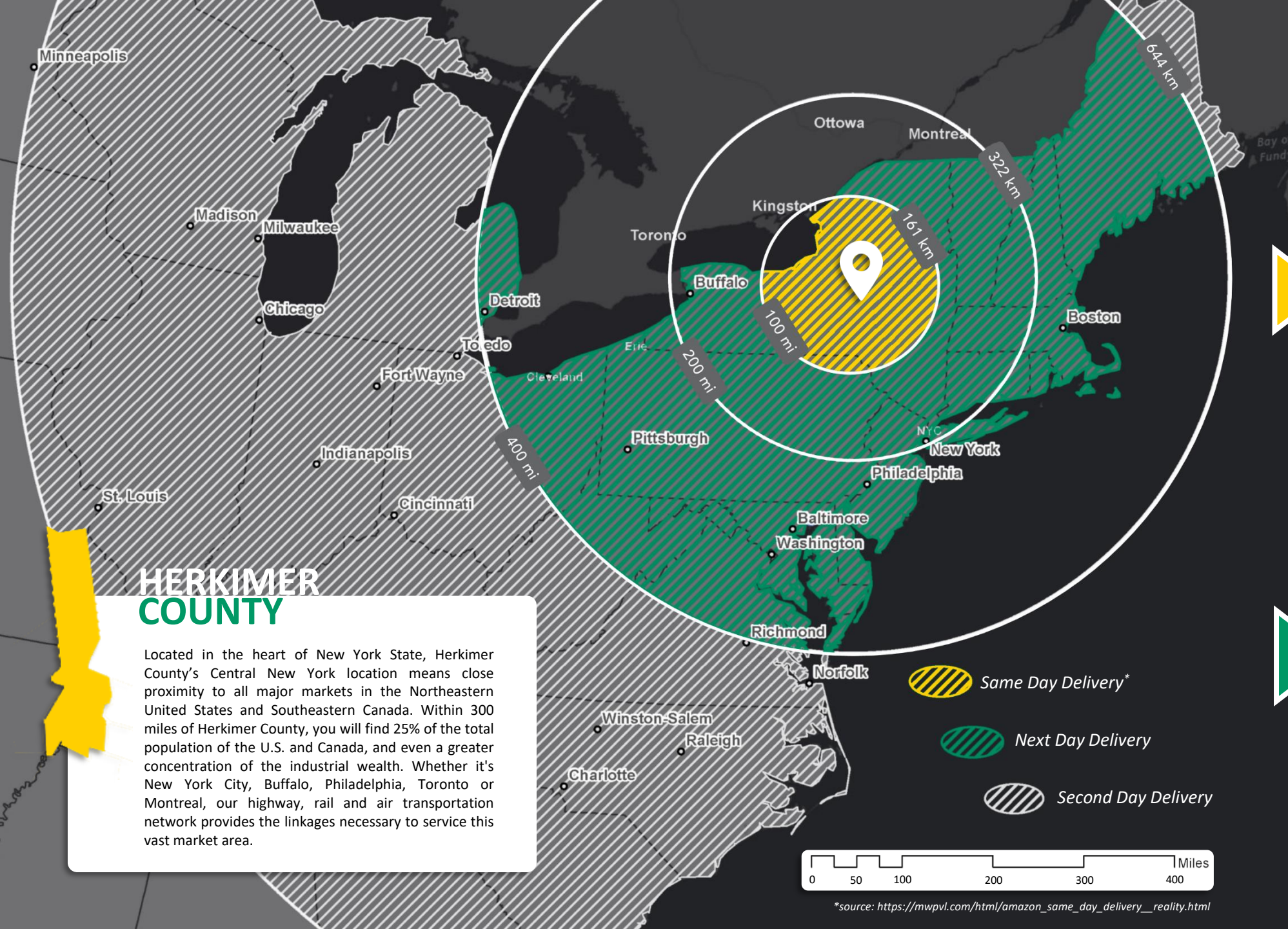
The Region is home to numerous academic and research institutions. Flourishing industry clusters include distribution, materials processing, industrial machinery and services, agriculture, craft food and beverage manufacturing, cybersecurity & information assurance, back-office, and financial services.

The Region is also an integral part of the new and developing Tech Valley, a 19-county region throughout eastern New York State, currently home to more than 1,000 technology companies whose annual economic impact is \$5 billion.

Today, Herkimer County is at the epicenter of this high-tech revolution, emerging as a global technology hub, offering the critical resources that existing and expanding business need to develop breakthrough technologies that will help shape the future.

Herkimer County continues to play an important role in the development of nanotechnology, fiber optics, LED technology, medical devices, renewable energy, and military and aerospace equipment.





HERKIMER COUNTY




Located in the heart of New York State, Herkimer County's Central New York location means close proximity to all major markets in the Northeastern United States and Southeastern Canada. Within 300 miles of Herkimer County, you will find 25% of the total population of the U.S. and Canada, and even a greater concentration of the industrial wealth. Whether it's New York City, Buffalo, Philadelphia, Toronto or Montreal, our highway, rail and air transportation network provides the linkages necessary to service this vast market area.

Herkimer County
IDA
Industrial Development Agency

CONTACT

John Piseck, Jr.
Executive Director
Herkimer County Industrial
Development Agency

315.868.4928 Mobile
315.866.3000 Office
jpiseck@herkimercountyida.org

-  Same Day Delivery*
-  Next Day Delivery
-  Second Day Delivery



*source: https://mwvpvl.com/html/amazon_same_day_delivery_reality.html